
DairyTest PC

USER'S MANUAL

English Version

innovAg

? ! Problems or Suggestions

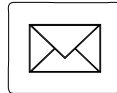
Phone



Australia (Toll Free)
International

1 800 061 167
+613 9521 9383

Write



InnovAg Pty. Ltd.
82 Vicotria St., Sandringham
VIC 3191 Australia

Fax



Australia
International

03 9521 8009
+613 9521 8009

All rights reserved. No part of this manual may be reproduced, transmitted, stored in a retrieval system, or translated into any language in any form by any means without the written permission of DairyTest Technologies.

Contents

Introduction

Why use DairyTest PC?.....	4
Using the Manual.....	4
DTPC Overview.....	5

Setting up

Installing DTPC.....	6
Connecting DairyTest to your PC.....	8
Finding the Serial Port Connector.....	8
Getting the Cables ready.....	9
Setting the Communications (COM) Port.....	10
Running DTPC.....	11

The Database

The DTPC Database.....	11
Creating a new Database.....	13
Opening a new Database.....	14
Renaming a Database.....	15

DairyTest Owners, Farms, Alarms and Sessions

Adding new Farms.....	16
Changing a Farm/Alarm.....	17
Deleting a Farm.....	17
Deleting a Session.....	18
Changing a Farm Directory.....	18
Adding an Owner name.....	19
Deleting an Owner name.....	19

Communicating with DairyTest

Retrieving data from DairyTest.....	20
Updating DairyTest's Farm Directory.....	20

Viewing the Readings

Viewing a Session.....	21
Changing the View.....	22

Printing the Readings

Printing the View.....	22
Printing a Session.....	22

If you have problems 23

Why use DairyTest PC?

Storing data on your PC has many advantages. Although you may not see a need in your situation we strongly recommend checking the list below.

- Data from previous tests can be stored indefinitely, leaving DairyTest memory free for more testing.
- Recordings can be compared to previous tests on the same or different farms.
- New farms can be added (or existing settings changed) more easily by using the full PC keyboard rather than DairyTest's 5 buttons.
- Quick recovery of the Farm Directory and alarm settings should DairyTest loose its memory (such as after long periods of non-use).
- Data can be archived onto disk and/or exchanged with other testers.
- Great teaching aid for recalling hard-to-diagnose problems while training.
- Complete test reports can be printed on full-size paper without lots of manual writing (upcoming feature).

Using the Manual

A basic working knowledge of IBMTM®© compatible PC's and the WindowsTM®© operating system is assumed. The following conventions are used throughout this manual to explain DairyTest PC operation:

Words shown in *ITALIC CAPITALS* are the menu items required to perform the operation.

Words shown in within < > are buttons to be pressed to perform the operation.

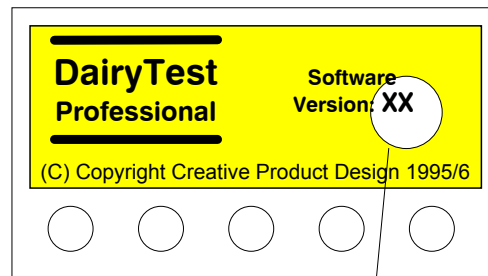
A sample database (called 'SAMPLE') is loaded with this software. Data shown in this manual is taken from SAMPLE, so if you are not sure of how a function works, OPEN the database called SAMPLE and use it to get the screen shown.

To avoid confusion DairyTest PC software is referred to as DTPC and DairyTest Professional is called DairyTest.

DTPC Overview

DTPC is a Windows™®© based program that allows you to store, manage, print and view DairyTest data and farm directory information. It requires a 386 or higher IBM™®©-compatible personal computer running Windows 3.1 or later and requires approximately 5MB of hard disk space.

DTPC will only work with DairyTest units running Version 11 software or later. To determine the software version on your DairyTest, turn your DairyTest ON and look for Version:XX in the opening screen (ie when you turn DairyTest ON, before the Main Menu).



or here

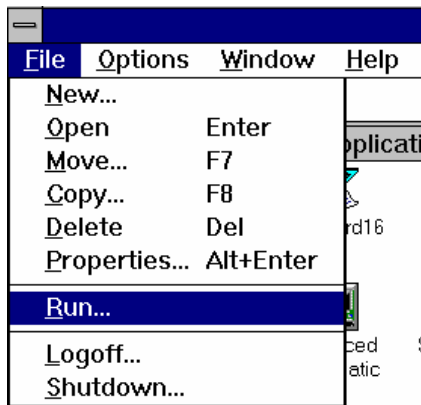
If you are running an earlier version of DairyTest software, please contact your DairyTest dealer or DairyTest Technologies directly for a free software upgrade.

If you are running Versions 8, 5 or earlier, you must return your DairyTest to your DairyTest dealer or directly to DairyTest Technologies for a free hardware upgrade.

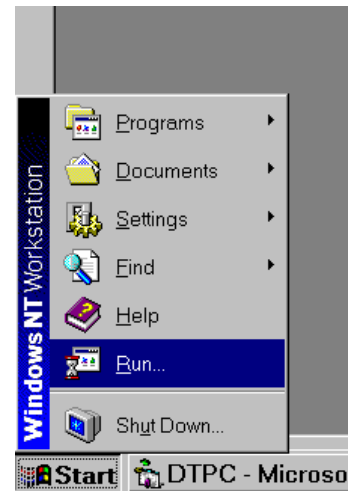
Installing DTPC

Start your computer and run Windows®. Place the Install disk (disk 1 of 3) into the floppy drive (we will assume the drive is A.; substitute the drive letter of your system if different) and then, from Program Manager:

Select *File - Run*

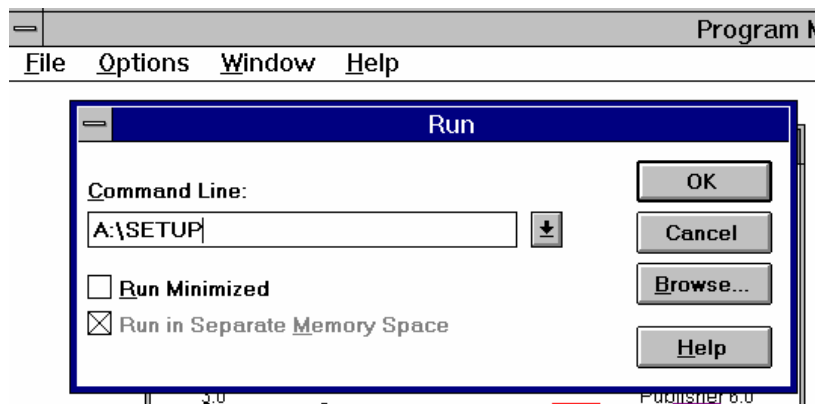


Windows 3.11, NT3.51 or earlier



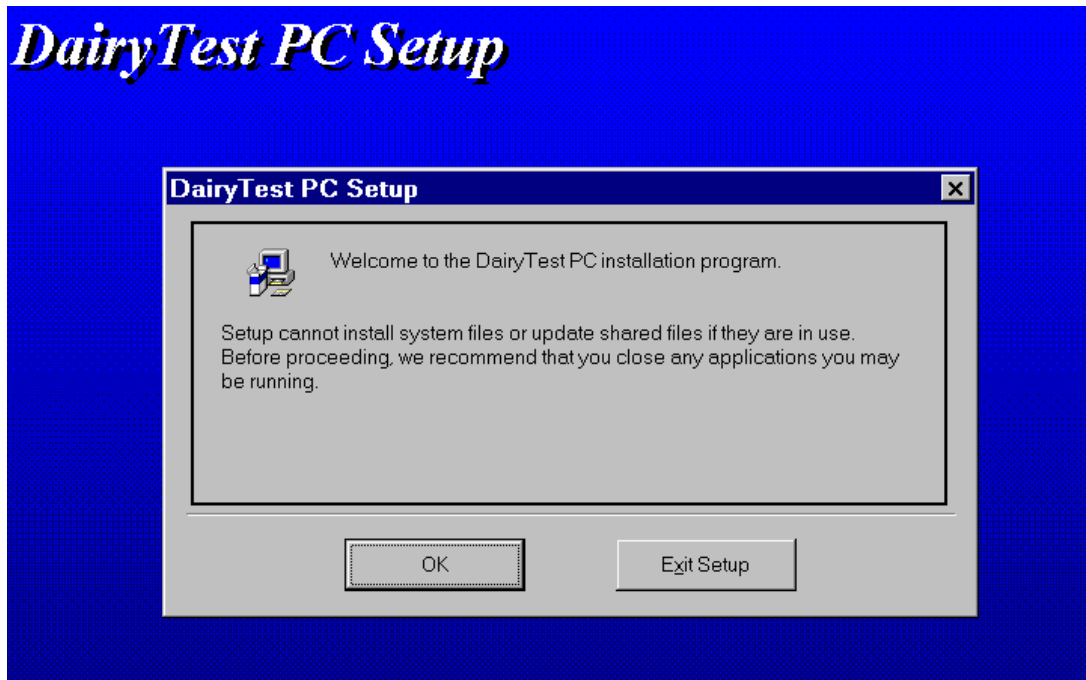
Windows 95 or NT4.0

then type A:\SETUP and press <OK>

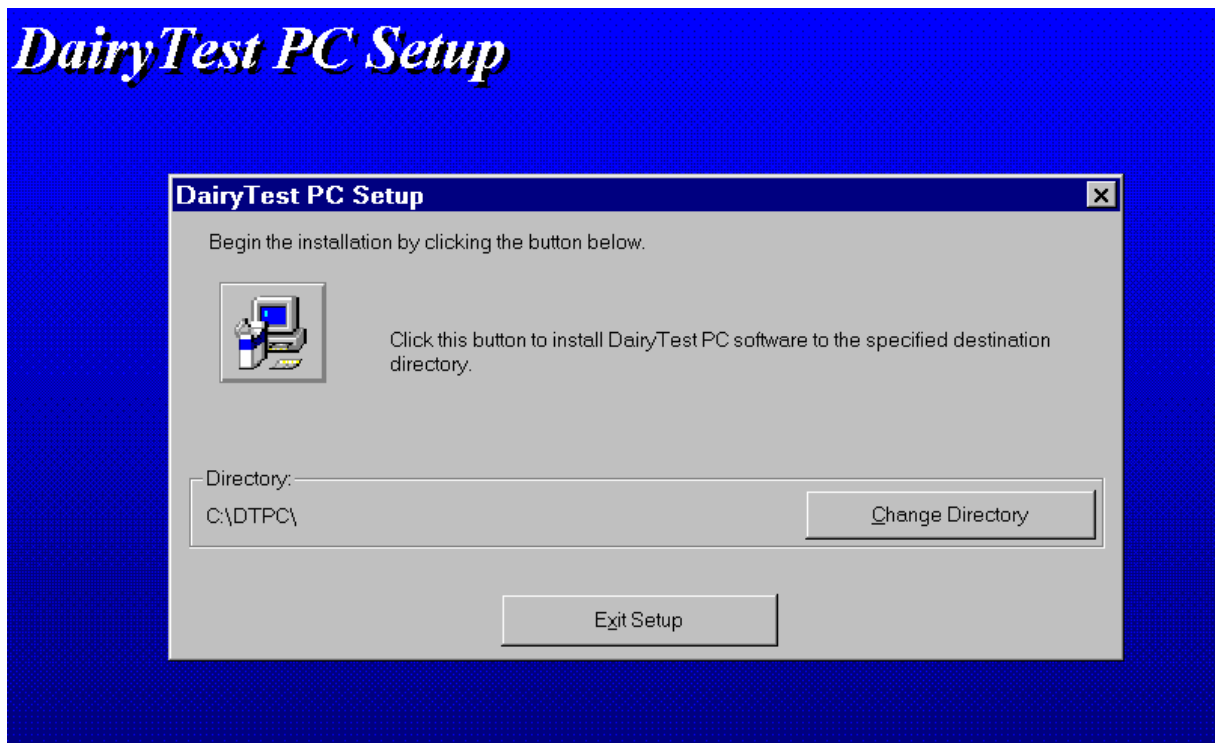


Windows® will now begin to install DTPC on your system. Insert disk 2 and 3 when requested by the computer and press the <OK> button.

Make sure there are no other programs running, then press <OK>.



If you want to change the directory in which DTPC will reside, press the <Change Directory> button and enter the name of the directory you would like DTPC to be installed to. Otherwise click the square button with the picture of a computer inside it.



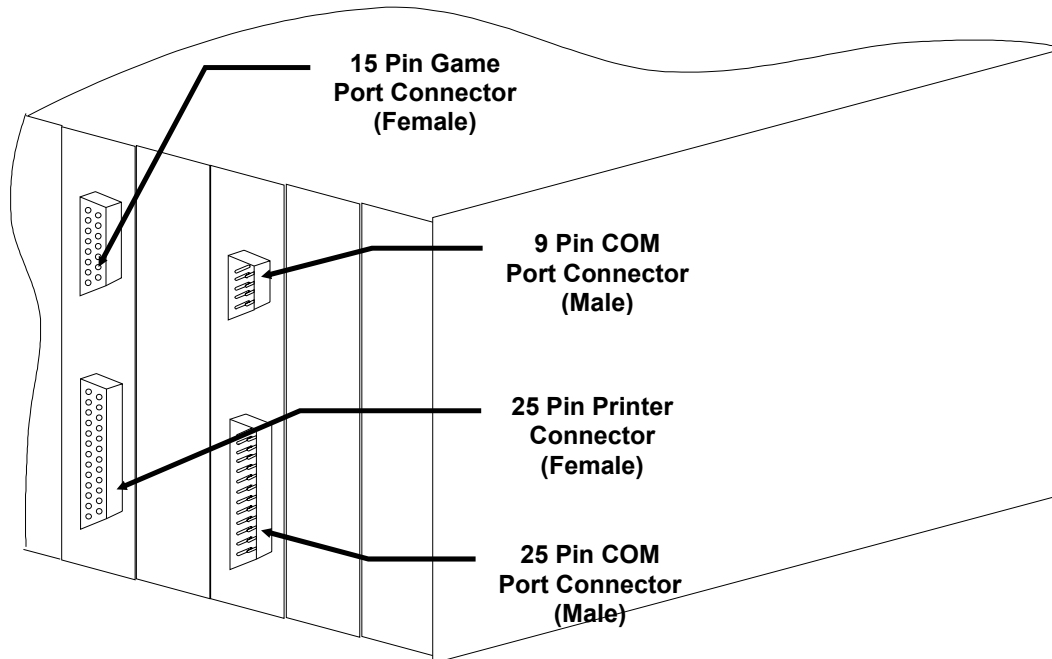
The program will then finish installing DTPC and make a program group for you.

Connecting DairyTest to your PC

Finding the Serial Port Connector.

DTPC uses the serial port (usually called COM port) of a PC to send information to DairyTest. The hardest part of using the software is usually finding the serial port on the back of the computer. PC's are available in many shapes and varieties which makes it difficult for us to tell you specifically where the port is. The information below should help you locate it.

The PC will have at least one COM port which is usually called COM1:. A second port (COM2:) may also be fitted. Your mouse will usually use a COM port and will typically be connected to COM1:. If your PC has only one port (usually the case with notebooks) then that's what you will have to use for communicating with DairyTest.



Typical PC Rear Panel.

A COM port will have a 'D' type connector (named because of its shape) on the back panel. The size of connector may be either 9 or 25 pins. If your PC has 2 COM ports it will probably have one of each. The COM ports can be distinguished from printer ports (LPT:) because the printer is always a 25 pin FEMALE 'D' connector (meaning it has 25 small sockets rather than 25 male pins). The Game or Joystick port is also easy to find because it has a 15 pin MALE 'D' connector. If nothing else you should be able to find the COM port/s by finding eliminating those two.

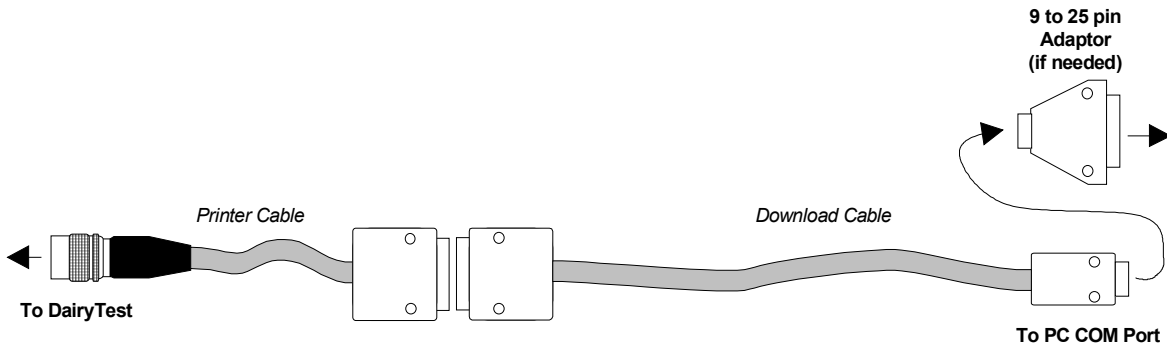
If you've found 2 COM ports the next thing to do is determine which is COM1: and which is COM2:. This can sometimes be a bit tricky. If a mouse was in one of them fair chance that is COM1: and it is best to leave it and use COM2: for DairyTest.

If you only have one serial port it will almost certainly be COM1: and that is the one you will have to use.

Be sure to correctly set DairyTest PC's COM Port. (See Setting the COM Port).

Getting the Cables ready.

DairyTest is supplied with 2 cables. One you have probably already used for the Printer and a second "Download" cable in the lid of the case. You will need both of these. Connect the Printer cable into the DairyTest and connect one end of the download cable into where the printer would normally go. If your download cable has a 25 pin connector on both ends, either end will do.

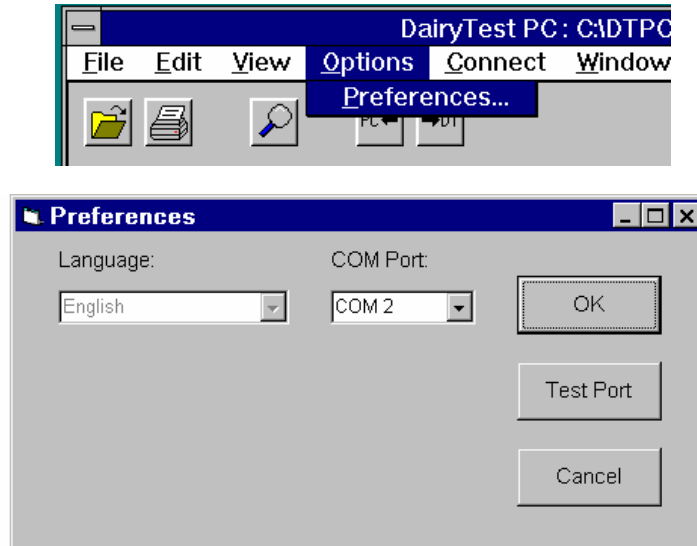


The spare end of the download cable plugs into the COM port of your PC. If your PC has a 25 pin connector you will need an adapter. A 9 pin to 25 pin adapter should have been supplied with your DairyTest.

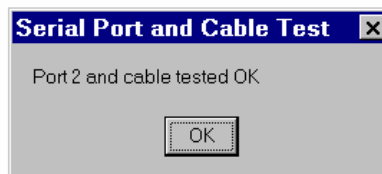
Setting the Communications (COM) Port

The default COM Port used by DTPC is COM 2. Change the COM Port setting to match the one you are using.

Options - Preferences



Click <TEST PORT> to check the availability of the selected COM Port and the download cable.



....means the COM port exists and the cable has been detected.

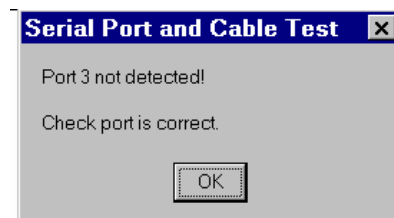
Note that if you have a modem connected to a COM port and you select that port, this test may pass.



....means the COM port exists but the cable has been not been detected.



followed by...

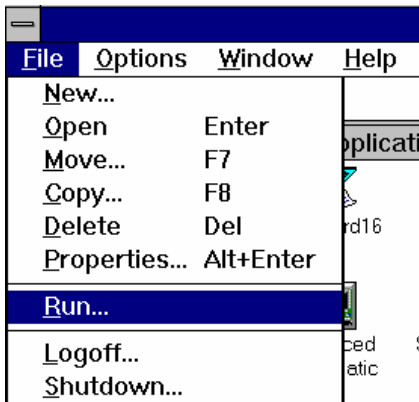


....means you have selected a non-existent COM port.

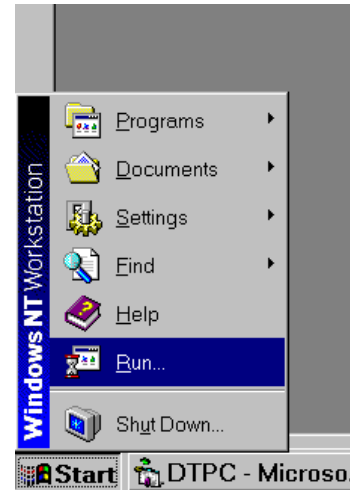
Running DTPC

To start DTPC from Windows™®© Program Manager, either:

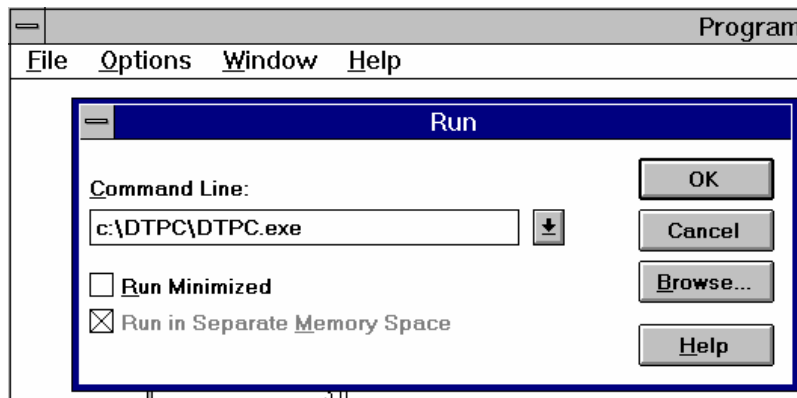
Select *File - Run* then type C:\DTPC\DTPC.EXE



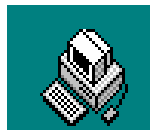
Windows 3.11, NT3.51 or earlier



Windows 95 or NT4.0



OR Double-click on the DTPC icon



Don't forget to set the COM Port which DTPC can use - See "Setting the COM Port".

The DTPC Database

DTPC stores the data and farm directory from your DairyTest Professional in a database. The default name of the database when you install this software is DTDATA.MDB, however you can change the name or create new databases at any time (See Creating a New Database).

DTPC stores all farms in a single group (the database) but keeps a separate list of those which are required for each DairyTest's Farm Directory. DTPC should therefore be considered the master from which the DairyTest Professional farm directory is manipulated.

The information is arranged into the following groups:

- DairyTests (Owner names)

DTPC allows you to manage multiple DairyTest units either as a collective (each DairyTest uses the same Owner name and Farm directory) or individually, with each DairyTest having a unique Owner name and Farm directory. DairyTest **Owner names must be created in the DairyTest** and retrieved by DTPC, ie. they **cannot** be entered from DTPC directly. (This feature prevents the re-naming of DairyTest units without PIN access).

- Farm Directories

Farm directories can be retrieved from your DairyTest, edited or created using DTPC and/or loaded into your DairyTest. Note that you will lose your data when uploading a farm directory into your DairyTest. If you add a farm using your DairyTest, it will automatically be added to DTPC when you next retrieve that DairyTest's data.

- Farms

Farms (and their alarm settings) can also be retrieved from your DairyTest, edited or created using DTPC and/or uploaded into your DairyTest. When creating new farms in DTPC, the alarm settings are copied from <Default Settings> (these can be edited just like any farm).

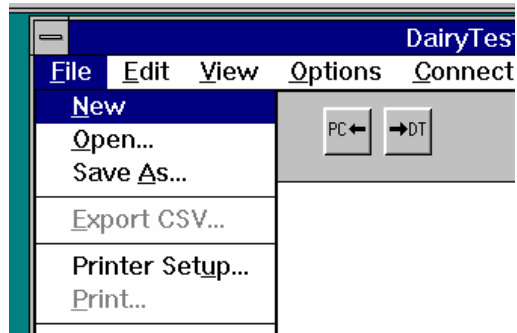
- Sessions

A session is defined as any data recorded at a farm on the same date. Session data can be viewed, printed or deleted on a session-by-session basis. DTPC also generates a session report that can be printed. Sessions cannot be loaded into a DairyTest nor can they be edited using DTPC. Note that if multiple DairyTests with the same owner name are used on the same farm at the same time, the data would be collected into a single session on DTPC and any duplicate memories would not be saved.

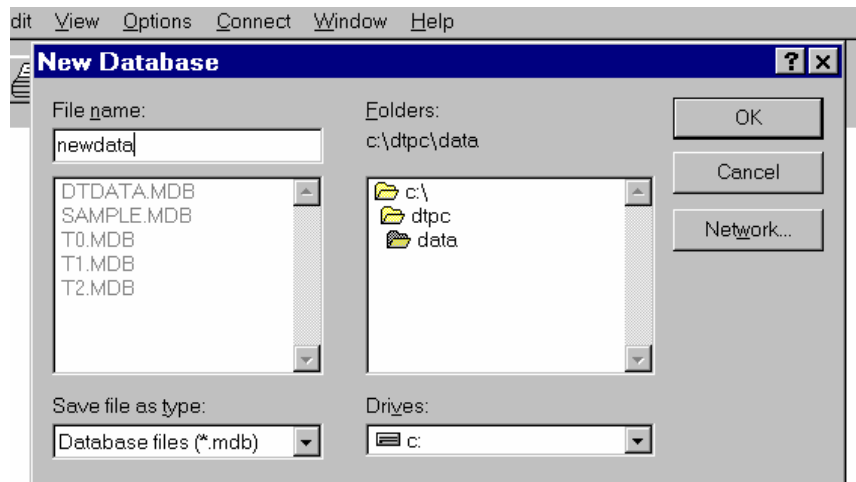
Creating a new Database

Create a new database if you want to separate your data into seasons, years etc.

Select *File - New*



then enter new name, NEWDATA for example

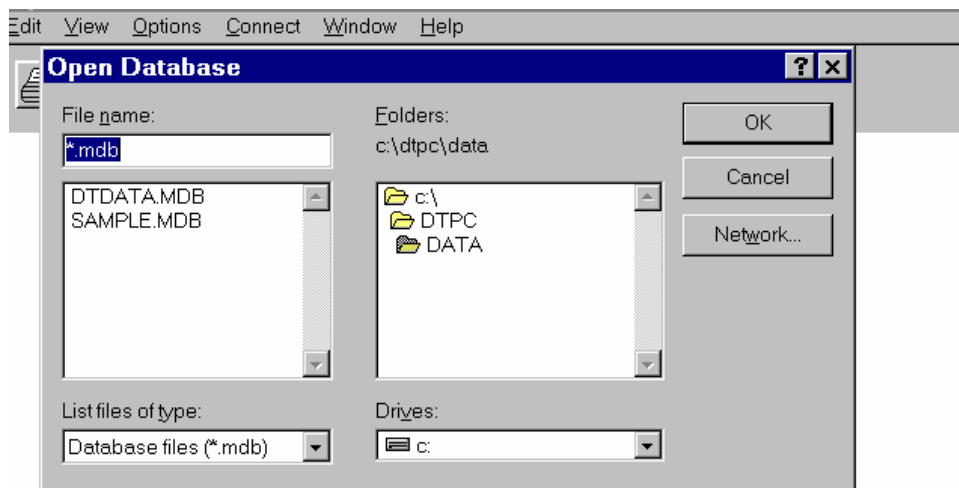
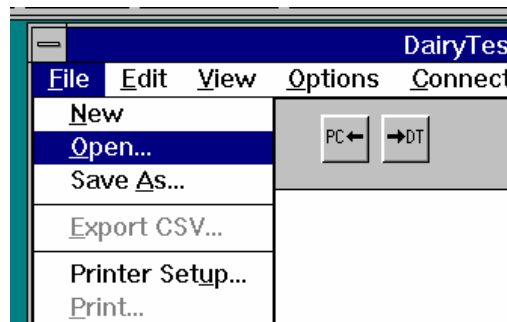


and click <OK>. The new database file will become the current selection for DTPC.

Opening a new Database

Use this command if you wish to work with a previously created database. Note that the current database name is shown in the title of the main DTFC window.

Select *File - Open* OR click

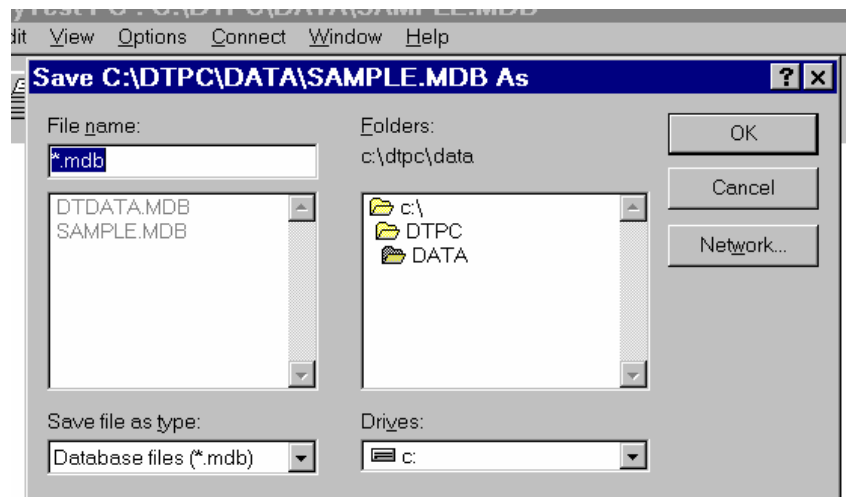
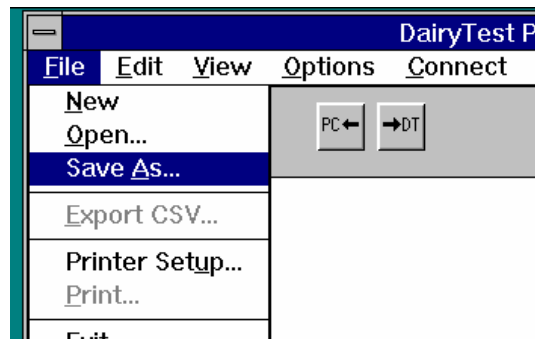


Select the database you wish to open with the mouse (or type the name) and click <OK>.

Renaming a Database

Rename a database when you want to make the name meaningful to you. eg Farms956 to rename a database with all data for the 1995/96 financial year etc.

Select *File - Save As*

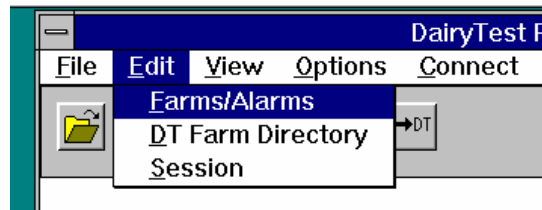


Type the new name and click <OK>. Note that the database is copied and renamed, so the old one still exists. The current database will be the newly created one.

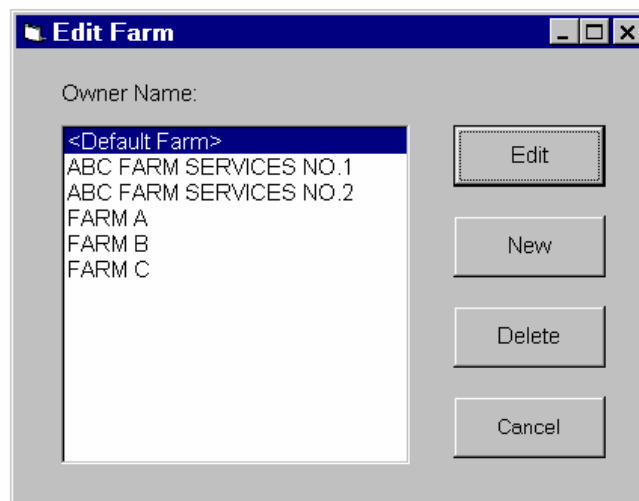
Adding new Farms

Add a new farm (and its alarm settings) when you gain new clients, or to set up your DairyTest. New farms can be added either by entering them into your DairyTest and retrieving them, or by creating them in DTPC. A new or modified farm directory can then be uploaded into your DairyTest.

Select *Edit - Farms/Alarms*



click *New*



	Min	Max	ALM
A+B%	60	70	OFF
B%	35	50	OFF
D%	15	60	OFF
D Sec	150	500	OFF
Max Vac	45	51	OFF
Rate	55	65	OFF

Next enter a name in the box under Farm Name:. Use the up and down arrows to change alarm settings, or click on the number and type the desired setting; then press <OK> to add the farm to the database. Press <CANCEL> to abort the entry.

If the box labelled "Copy New Name to all DairyTests" is ticked, the new farm will be added to all DairyTest Farm Directories. If a Directory is full (ie it contains 200 farms) the new farm will not be added. Note that DTPC does not tell you if it did not add a new farm to the directory.

Changing a Farm/Alarm

Select *Edit - Farms/Alarms* (See above)

Select the farm you wish to edit, and press <EDIT>. Make the changes you desire, then press <OK> to save the changes to the database. Press <CANCEL> to abort the changes.

Deleting a Farm

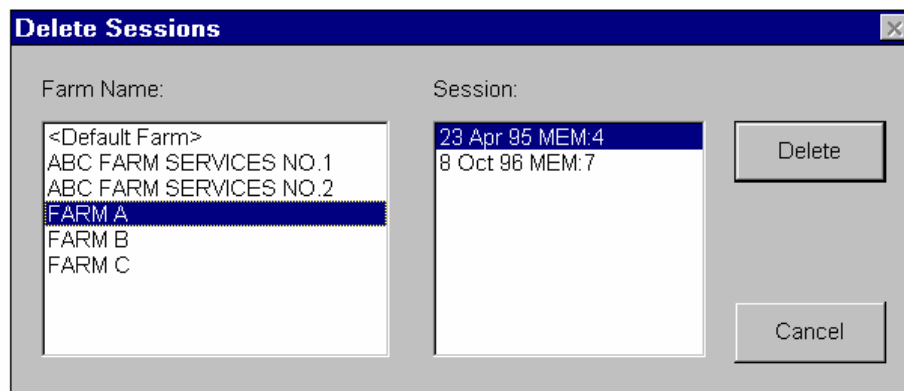
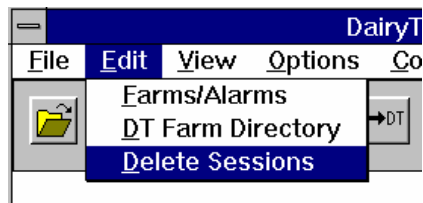
Select *Edit - Farms/Alarms* (See above)

Select the farm you wish to delete, then press <DELETE>. The farm and all related session data will be removed from the database.

Deleting a Session

Delete a session when you no longer wish to keep that data.

Select *Edit - Delete Sessions*



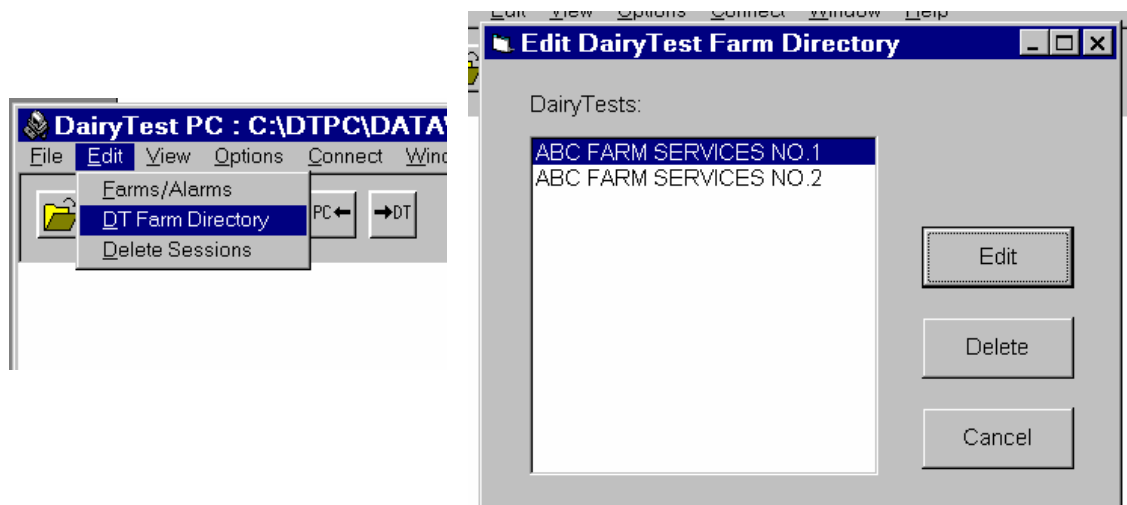
Select the Farm and session, then press <DELETE>. If there are no sessions to delete for that farm, the buttons will be disabled.

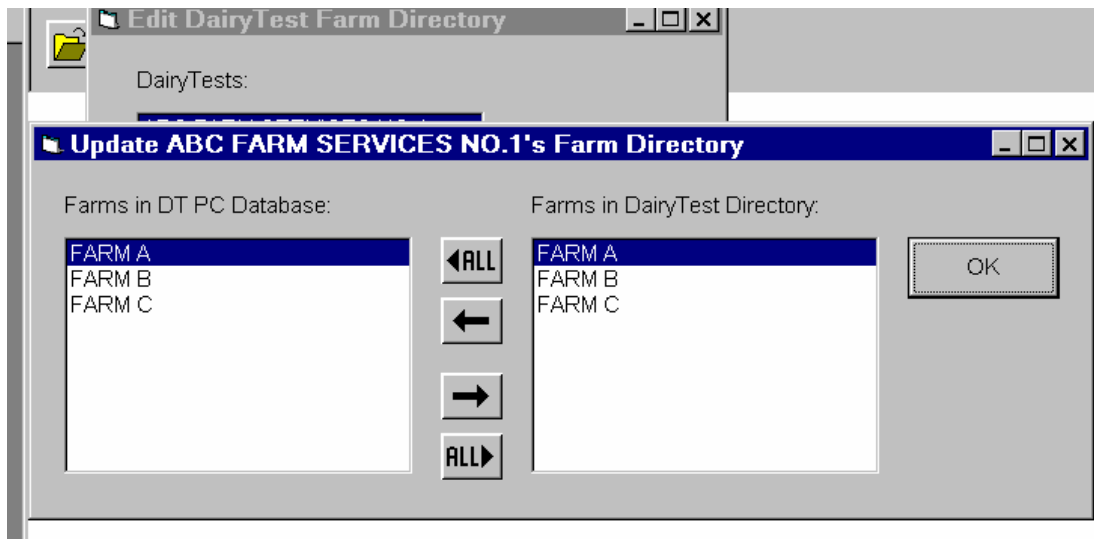
Changing a Farm Directory

You can change your Farm directory in DTPC, then upload it into your DairyTest which makes managing your Farm directory much easier.

Select *Edit - DT Farm Directory*

Next choose the DairyTest you wish to edit and press <EDIT>.





Now select the farm you want to add from the DT PC Database list, then press the right arrow to add it to the DairyTest's Farm Directory.

Remove a farm by selecting it from the DairyTest Directory list and pressing the left arrow.

Use the ALL buttons to transfer all the farms from/to DairyTest PC. Remember that DairyTest Professional has a limit of 200 farms in the Farm Directory.

Press <OK> when you have finished.

Adding an Owner name

The ONLY way to add an Owner name to DTPC is to retrieve it from your DairyTest. If the Owner name in your DairyTest does not match one in the database, DTPC will add it and copy the farm directory (and data) from your DairyTest.

You can change the alarm settings of the Owner name using DTPC in the same way as for a farm.

Deleting an Owner name

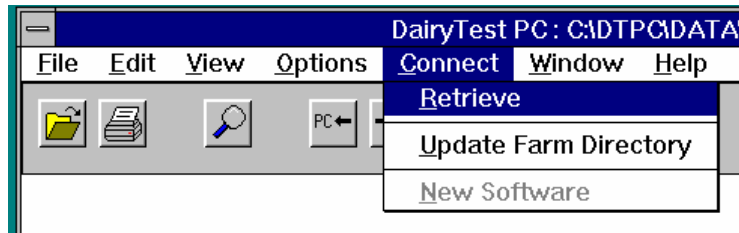
Owner names can be deleted in the same way as farms.

Retrieving data from DairyTest

Use the retrieve function when you want to transfer your DairyTest data to DTPC.

Attach DairyTest to your computer, turn DairyTest on and select retrieve. DTPC will report on what it has retrieved from your DairyTest. Note that alarm settings of existing Farms will not be changed if they are different on the DairyTest.

Select *Connect - Retrieve* OR click

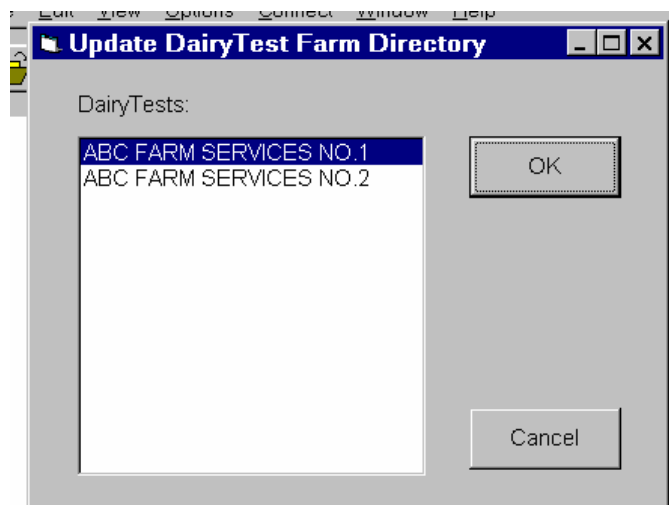
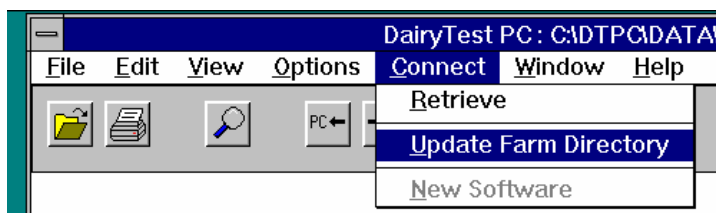


Updating DairyTest's Farm Directory

Update DairyTest's Farm Directory when you have made changes to Farm settings or the Farm Directory in DairyTest PC.

Attach DairyTest to your computer, turn DairyTest on and select Update. Next select the Owner that you wish to Update and press OK.

Select *Connect - Update Farm Directory* OR click



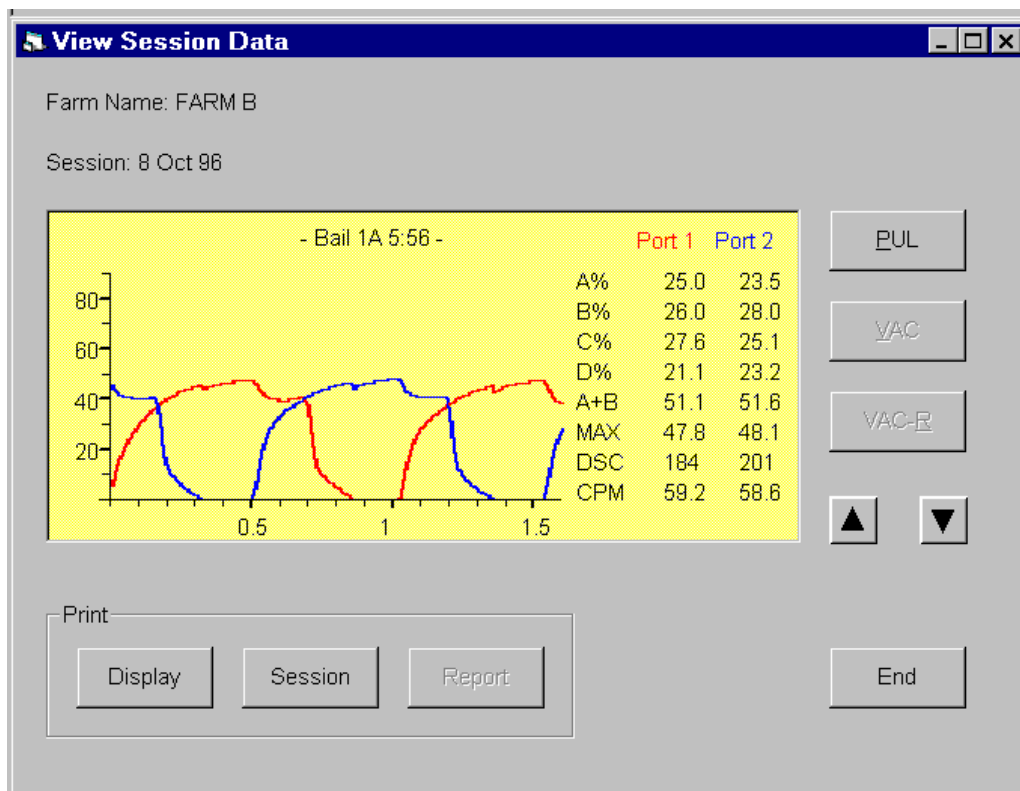
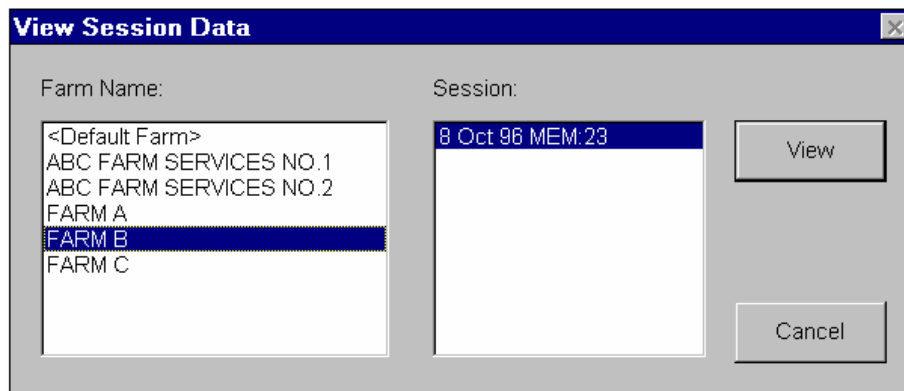
Viewing a Session

DTPC allows you to view any recorded data for a given session.

Select *View - Farm Session* OR click

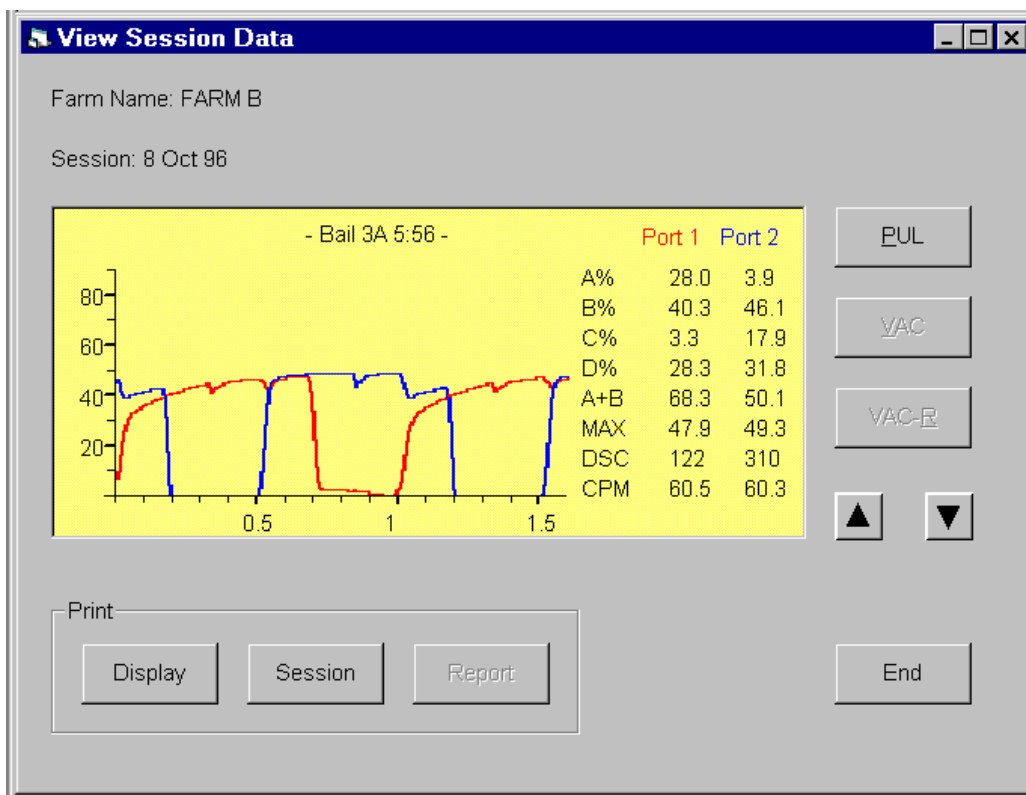


Select Farm and session then press <VIEW>. Note that the VIEW button will be disabled if there are no sessions.



Changing the View

When viewing a session, you can change the memory type by pressing the appropriate button (<VAC> for vacuum memories, <PUL> for pulsation memories) and change the memory being viewed using the UP and DOWN arrows.



Printing the View

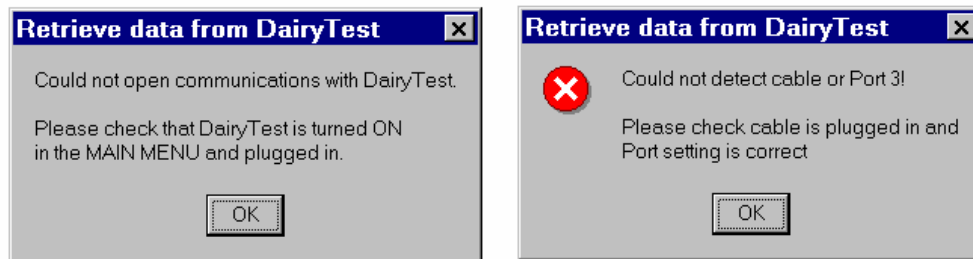
You can print a copy of the memory being viewed by pressing the <DISPLAY> button in the Print area.

Printing a Session

You can print a copy of ALL memories for a session (Vacuum and Pulsation) by pressing the <SESSION> button in the Print area. Each memory will be printed on a single page.

If you have problems

DTPC can't communicate with DairyTest



- Check that DairyTest is turned ON and in the Main Menu.
- Check that the cables are firmly plugged in at each end.
- Check that DTPC is configured with the correct COM port.
 - See 'Setting the Communications (COM) Port'

Read this manual thoroughly

If you can't solve the problem

Call us (Toll Free) on 1 800 061 167 - We're here to help!